

estimate

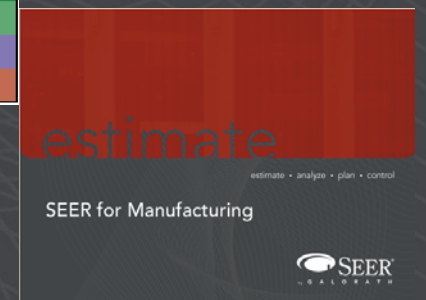
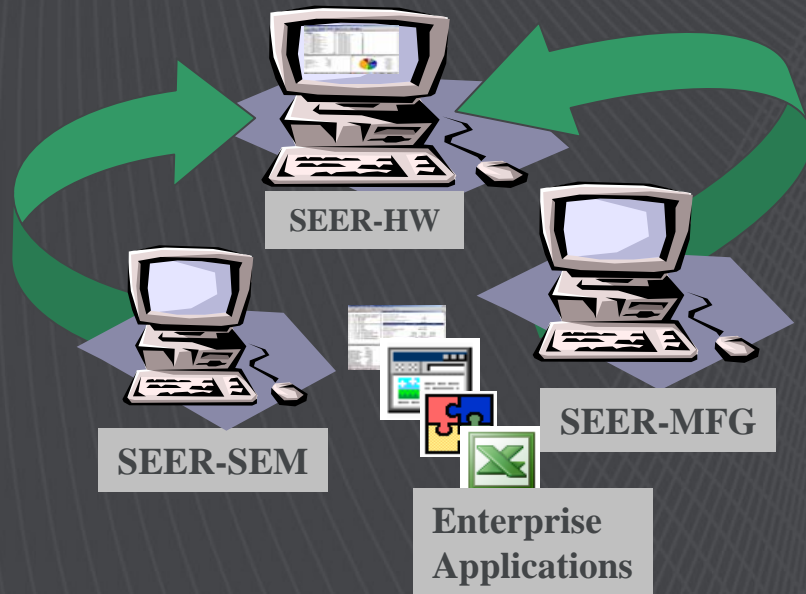
estimate • analyze • plan • control

Linking SEER-HW & SEER-MFG

Joe Falque



SEER-HW & SEER-MFG *“Working Together”* *To Meet Your Estimating Needs*

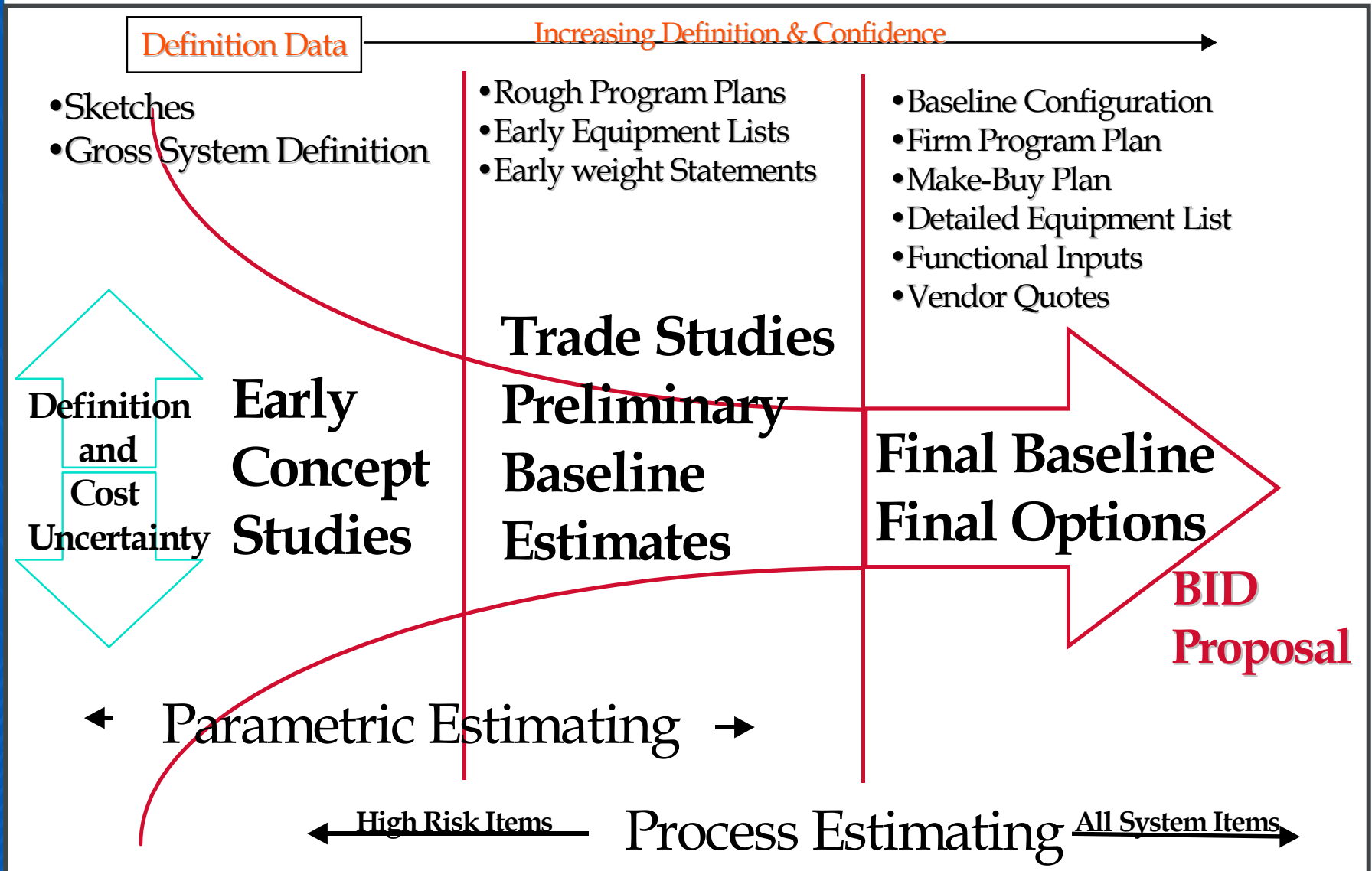


Utilizing The SEER Enterprise Suite

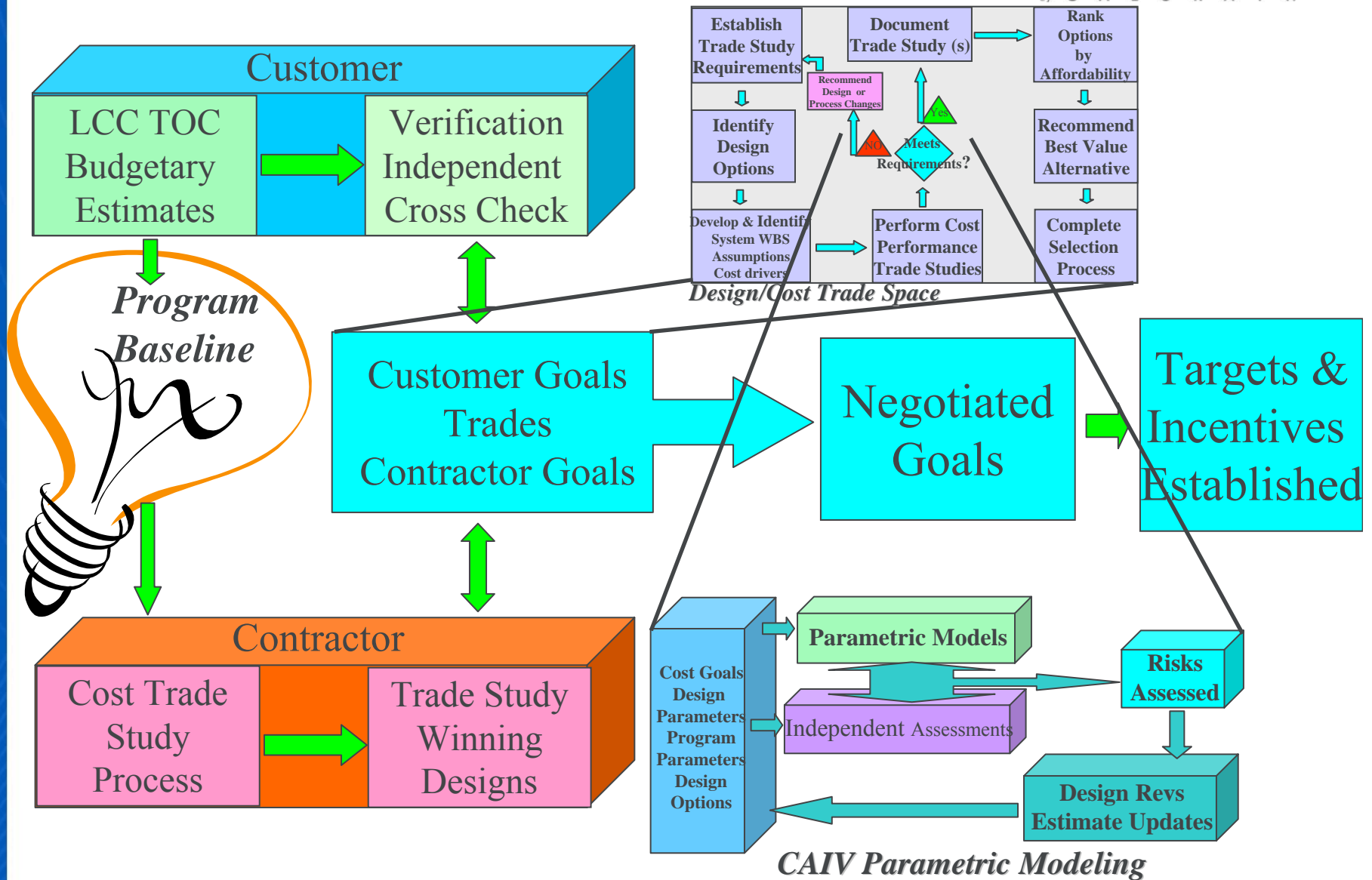


- Estimating Process is a Step By Step Process in Lock Step with the Program Maturity
- Using a Tool Set that is right for each Step Is Critical
- SEER's Built in Linking Capability Allows Updates to be Captured and Utilized
- Re-Establishing the Baseline and Documenting an Audit Trail fulfilling the Principles of the CAIV Process.
- Total Proposals in most cases need to be Submitted via a Parametric Tool. (Time & Data constraints)
- However a Top Down Parametric Tool is not always Responsive enough to
 - To do In-Depth Design/Commodity Trade Studies.
 - Validate a Vendor Design or Sub-Contractor Bid.

Affordability Analysis Estimating Flow



CAIV Trade Study Process



Utilizing The SEER Enterprise Suite



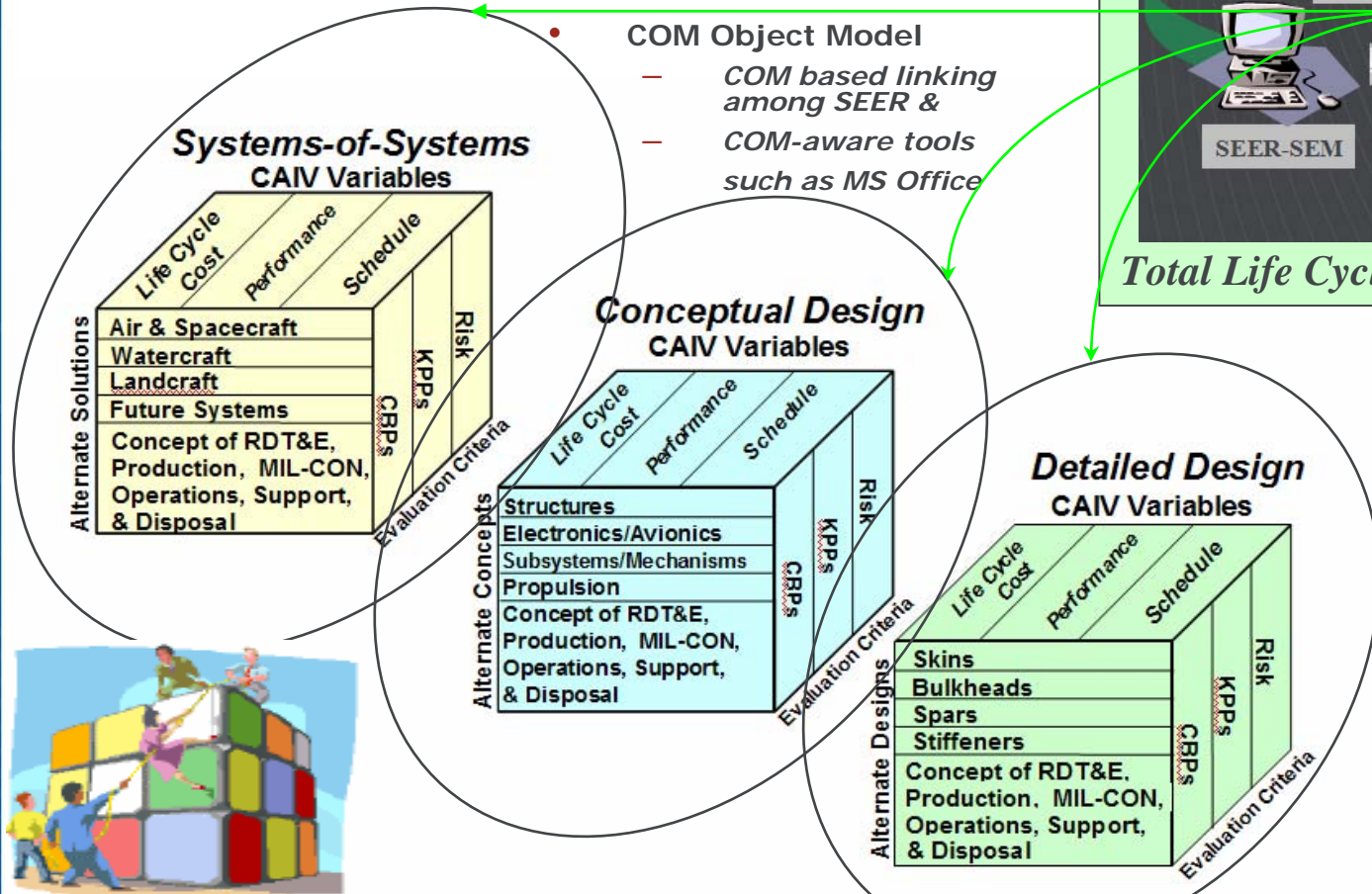
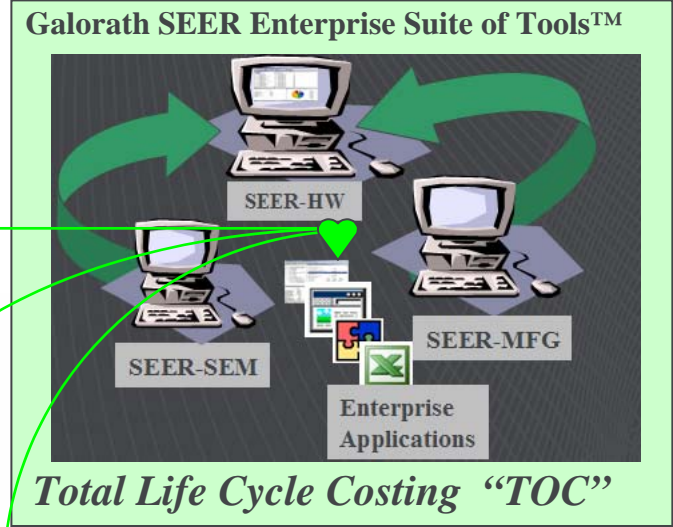
- *Start out in SEER-HW to Set Targets & Size the Project*
- Starting with Just Basic WBS and A Weight Statement using SEER- "HW"
- Building the entire Project in the "HW" Tool
 - Produces your First Cut Estimate & Target Costs
- "HW" will allow you to set all your "Target Costs" by WBS
- Utilization of the "Targets" by your "Integrated Project or Product Teams"
- IPT's to set Goals for CAIV to meet Program needs.
- *Evaluate the SEER-HW Estimate output to Identify the High Value and High Risk Items.*
- *Setup Teams to begin the Evaluation Process.*
- *Development of the Trade Study Winners.*
- *Then updating the SEER-H Target estimates with the SEER-MFG detailed Trade Study estimates to complete a proposal position.*
 - Using the build in Link provided SEER-HW & DFM can be "Live Linked" or updated Manually.
 - Giving you the versatility to do "Top Down" and "Bottoms up" Program Estimating and Affordability Assessments as required.
 - SEER-HW can be Utilized as the Model to Begin and Transmit you Parametric Estimate to your pricing system than to the Customer.

SEER Enterprise Suite of Tools™ Linking Enablers



Server Mode allows Interoperability with any Software

- MS Office Tools
- Project Management Systems
- Supply Chain Management Systems
- Internal Estimation or Proposal Tools



Trade Studies and Cost Parameter Inputs & Outputs can be fully Automated

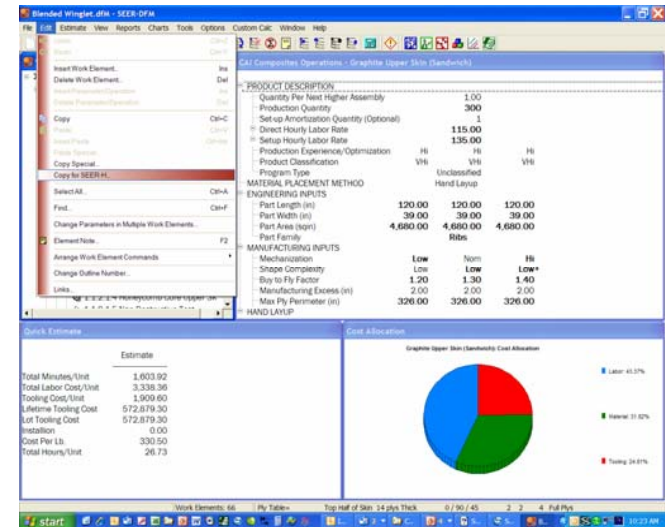
- "Automation" (Programming) Interface for Control (E.g. MS Project, Frontier Technology's Integrated Cost Estimation (ICE), ACE-IT by Tecolote Research, Inc., FIPER by Engineous Software, Inc., MODEL CENTER by Phoenix Integration Etc.)
- Pre & Post Processing by User Applications
- Flexible Export provides easy access any output or Input

SEER-HW & MFG LINKING "HOW TO"



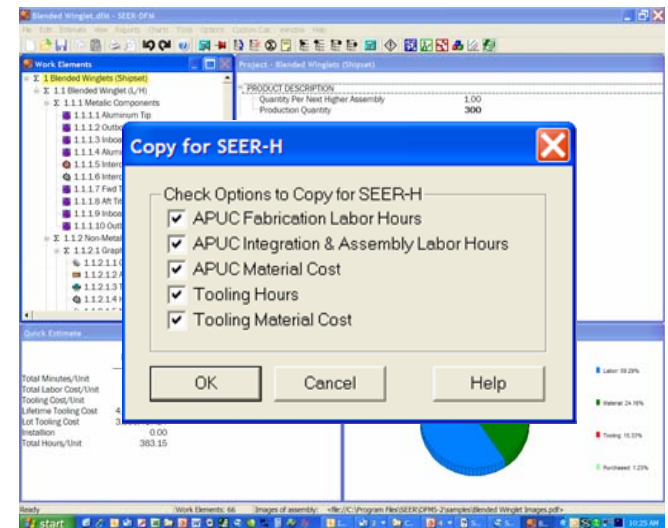
Select Edit / Copy for SEER-HW

- Copy SEER-MFG estimates to the clipboard ready for pasting, or paste linking into SEER-HW.
- Mechanical and Electrical work elements in SEER-HW7.0 include a set of SEER-MFG (Optional) parameters specially designed to accept estimates from the Copy for SEER-HW option.
- SEER-MFG estimates can now be included in SEER-HW production schedules, and O&S analysis.
- Copy for SEER-HW brings up the Copy for SEER-HW Options dialog box:



Copy for SEER-HW Options

- Check each item you want to copy for SEER-HW
- Each time data is sent to clipboard, the following note is included to provide an audit trail within SEER-HW:
 - "SEER-MFG Estimate copied for SEER-HW on [TODAY'S DATE], from the [DFM FILE NAME] file, saved in the following directory [FILE PATH]."
- Copy for SEER-HW returns data to the windows clipboard for the currently selected work element.
- Outputs are included as Available Outputs in the Flexible Export dialog.



SEER-HW & MFG LINKING "HOW TO"



Live DEMO

- Please Feel Free to Ask Questions!